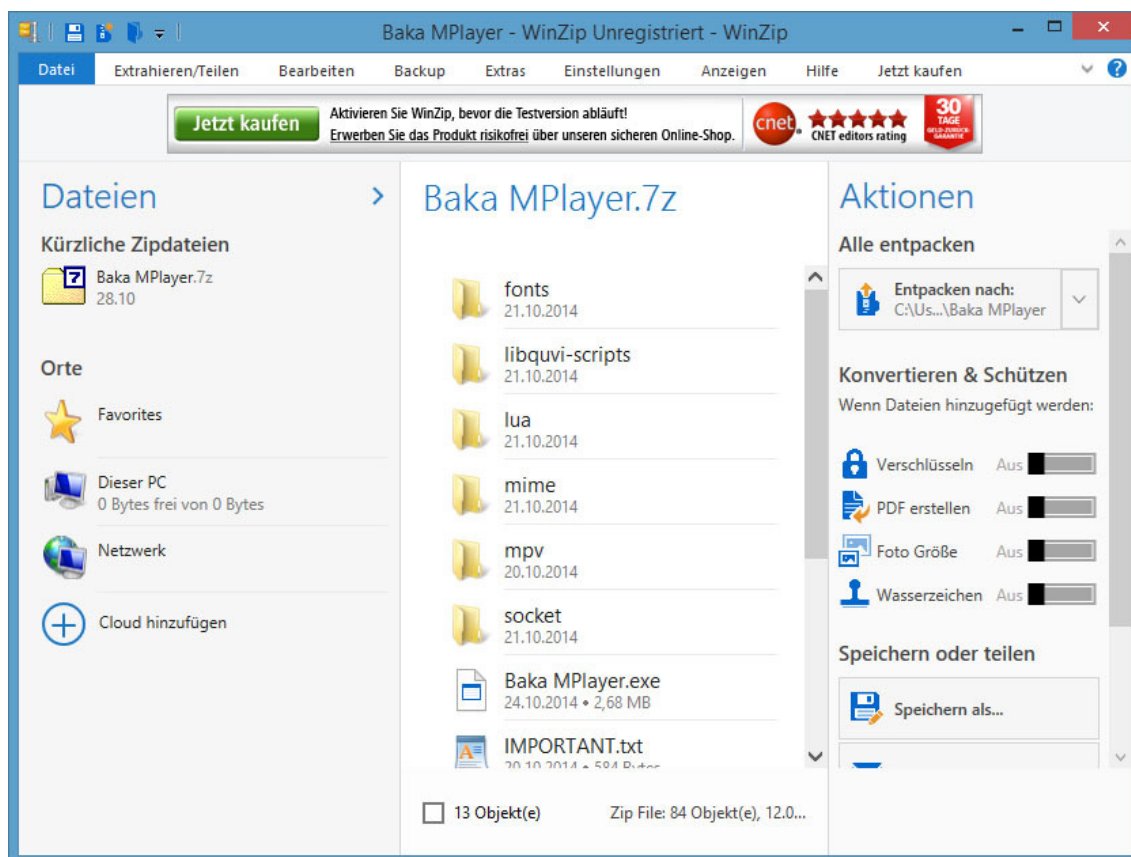


Winzip 11 Complete Crack



DOWNLOAD: <https://byltly.com/2il5ms>

Download

Q: Explanation of "the trill in the rumba" I have been trying to figure out what the specific trill in the rumba is that many musicians refer to as a "desafinado". I know that it is a specific trill on the F# of the soprano but I'm not sure how to play it. Is it something that can be played with the thumb on a soprano instrument, or what? If the question should be "why do these musicians call this a desafinado"? I'll try to elaborate. The desafinado is a very specific note in a rumba. Its an F# in the treble clef, and its usually played on a soprano in a fast tempo (without trills). A: Although the exact pattern of the trill is variable from the different families of the instrument family, it does typically share some of the characteristics. the trill is a broad press of the button (in a family where the buttons are represented by three lines) which is placed on the fingerboard above the string to be trilled. a very sharp attack is used to produce the sound. the note is very fast and ends abruptly without a release. There are some variable differences in the sequence of the trill and how long the trill lasts. Here are some patterns: The trill, notated as

"Desafinado" on the rumbera, is often (but not necessarily) a series of trills. The trill is usually played simultaneously on the string of the fretboard and the string below. Q: Views not working on my own local website Everything was working fine on my website until I added views (views slideshow), when I got the following error on the slideshows page. Fatal error: Maximum execution time of 30 seconds exceeded in /home/my-website/public_html/includes/bootstrap.inc on line 635 There are no.inc errors in the log. I have tried changing in to css and html. The method you're calling (slide()) is only used for generating content.

A view's purpose is to generate an output. View's 82157476af

Related links:

[Train Simulator: DB BR 648 Loco Add-On Download Apunkagames](#)
[samsung ml 2851nd reset](#)
[calaveras literarias para maestros de matematicas cortas](#)